

## Provider Partners North Carolina Advantage Plan (HMO I-SNP) (H4439- 001)



### CLINICAL SERVICES

Dedicated Nurse Practitioner and RN Care Coordinator will regularly visit with members



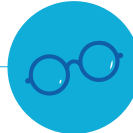
### NON-EMERGENCY MEDICAL TRANSPORTATION

Up to 70 one-way trips a year



### DENTAL

\$5,000 allowance for routine and comprehensive services a year



### VISION

One routine eye exam & \$300 allowance for eyewear a year



### OVER-THE-COUNTER (OTC) BENEFIT

\$300 quarterly catalog allowance



### HEARING

One exam every year & \$2,000 allowance for hearing aids every 2 years



### PODIATRY

Up to 6 routine visits a year

**800-405-9681 | TTY 711**

#### Hours of Operation:

October 1 – March 31  
8 AM – 8 PM Daily

April 1 – September 30  
8 AM – 8 PM M-F

A complete list of supplemental benefits is available in the Evidence of Coverage, which can be found at **pphealthplan.com**.

Provider Partners Health Plans (HMO I-SNP) is a Health Maintenance Organization (HMO) Special Needs plan (SNP) with a Medicare contract. Enrollment in Provider Partners Health Plans depends on contract renewal.